

INDIRA GANDHI INSTITUTE OF MEDICAL SCIENCES,

SHEIKHPURA, PATNA – 800 014 (Bihar, India)

Tel.: 0612 – 2297631, 2297099; Fax: 0612 – 2297225; Website: www.igims.org

E-Mail-director@igims.org

Ref. No.: IGIMS/2021/ 1193/Adm./Store

Date: 01 / 10 / 2021.

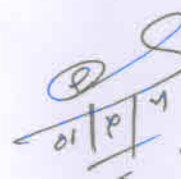
Tender Notice No-12/2021-2022/Bio-Medical Equipment/IGIMS/Store

Out Come of Pre-Bid

Amendment Notice to the Tender Document bearing Tender Notice No-12/2021-22/Biomedical Equipment./IGIMS/Store for the supply, installation and commissioning of Walk in Cold Room for Central Pharmacy, IGIMS, Patna-

Amendment mentioned hereunder are notified:-

Description	Revised Specification are as follows:
Walk In Cold Room for Central Pharmacy	<ul style="list-style-type: none">➤ External Dimensions of Walk in Cold Room (Lx B x H): 17.75 x 17.75 x 10 feet. (Size of the walk in cold room may vary based on the available space as well as storage requirements).➤ Temperature range: Suitable to maintain temperature of 2 to 4 degree centigrade at 24 hours.➤ Panels for walls and ceiling:-<ul style="list-style-type: none">• Panel thickness: 60 mm and Internal & External Finish including ceiling made of CYCLOPENTANE PUF CFC Free panels with PPGI/PPGI finish.• Floor insulation and thickness: 60 mm thick PUF panel finished with marine ply and aluminum checker sheets.• Door type and size: 34 inches x 78 inches clear opening manual PP/PP type door.• No of Doors: 01• Product stacking details: on Racks as per drawing attached. (Under Scope).• Ambient temperature: 45°C.• Refrigeration unite selected and details of capacity: Reputed make Evaporating and condenser unit air cooled having capacity of 40,000.00 BTU. Number of refrigeration unit should be two nos.• Refrigerant: Eco –Friendly R404a or other suitable.• Type of Condenser: Air cooled high ambient designed scroll compressor. no of condensing unit per chamber 02 nos. & No of evaporator unite per chamber 02 nos.• Light Fitting : LED• Temperature Controller: To be provided (Should be fitted with Data Logger for monitoring of inside temperature.• Power Supply : 415V 3 - PH/50Hz• Auto change over: 01 Set.➤ Panel Design Should have:<ul style="list-style-type: none">• All the wall and ceiling corners will be connected with cam lock and three way gasket made of PVC to accept fit of gaps between panels and provide air tight joints without using silicone sealant• Corners of the Floors should be rounded to impeded bacteria growth.• Corner Panels should be L Shape and corners cove will be rounded• Temperature Indicator: Digital Type LED Display at suitable eye length outside with sensor probe hanging in air inside the walk-in cold room.• Interior Lamps: 40W, LED, moisture proof – 02 Number.



➤ **Refrigeration system:**

- Two Sets of Condensing and Evaporating units each of 100% capacity
- Auto change-over every four hour between both the sets of condensing and evaporating systems.
- These two units should function such that in case of failure of one unit, the second unit remains operational full time.
- **No. of refrigeration system:** Two Sets
- **Condensing Unit:** Complete Two set (of compressors, coil, circuits and condensing fans)
- **Compressor Type:** Scroll, Make: Any reputed make, number of compressors: 02 (Two Nos.) Compressor Setting: Through Thermostat / Sensor / Controller.
- **No of Condensing Fan:** Two (One for each set)
- **Condensing Coil Material:** "H" inner grooved copper tubes with Slit Aluminum.
- To be located at a place easy to access for repair and with adequate safety to prevent theft/external damage.
- Evaporation Unit: Complete two sets including for fan and cooling coil of suitable capacity and other accessories like copper Piping, insulation, etc.)
- Location- Ceiling Mounted
- Piping: Copper piping and Cabling as required between condensing and evaporating unit
- Length of Copper Piping between cooling and evaporating units: 15Feet approx... (depending upon the location of cooling unit from WIC Room)
- Refrigerant: 100% CFC Free
- **Power Supply:** 415V 3 - PH/50Hz. Suitable Servo Voltage Stabilizer of required capacity is to be supplied for satisfactory functioning.
- **Installation and Commissioning:**-Including nitrogen leak test for refrigeration gas and pressure test for compressor unit.
- **Warranty and Service:**
 - Five years for whole of the unit followed by Comprehensive Annual Maintenance Contract for next five years)
 - Warranty starts from installation and commissioning on site.
 - Servicing to be done on a regular basis as per terms of bidding document.

Cold Room Drawing is attached for reference.

Please Note:

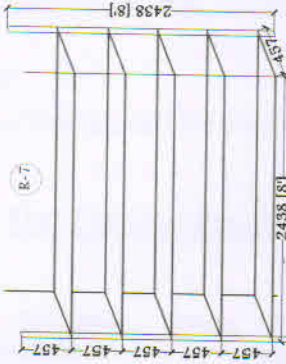
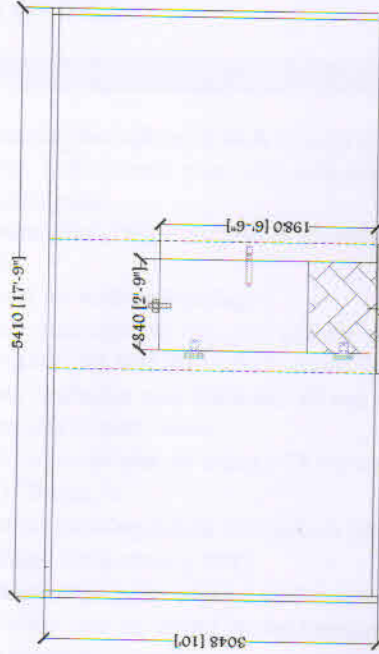
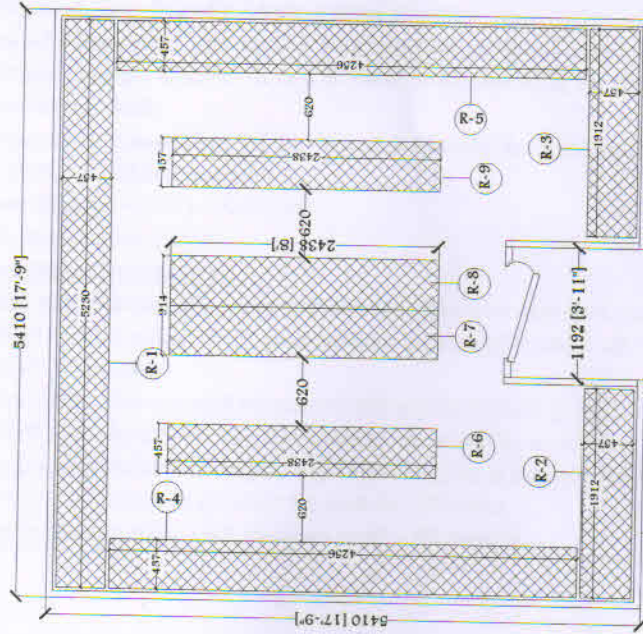
1. All other specification, terms & conditions of the original tender document shall remain unchanged.
2. This amendment shall be part of the tender documents and become effective immediately in supersession to the earlier corresponding version.

The documents also can be downloaded from the IGIMS website www.igims.org.


Director,
IGIMS, Patna



INDIRA GANDHI INSTITUTE OF MEDICAL SCIENCES, PATNA



RACK SIZE:-
 R1 :- 5230 (W) X 457 (D) 2438(H) MM
 R2 & R3 :- 1912 (W) X 457 (D) 2438(H) MM
 R4 & R5 :- 4256 (W) X 457 (D) 2438(H) MM
 R6 & R7 & R8 & R9 :- 2438 (W) X 457 (D) 2438(H) MM

ROOM SIZE

COLD ROOM SIZE:- 5410(W) X 5410(W) X 3048 (H)
 WALL AND CEILING :- 60 MM THICKNESS OF PUF PANEL
 WITH PPGI SHEET BOTH SIDE
 FLUSH DOOR SIZE :- 840 X 1980 MM WITH 60 MM THICKNESS,
 KICK PLATE AND 60 MM LIFT
 FLOOR :- 60 MM PUF PANEL FINISH WITH ALUMINUM CHEQUERED SHEET AND MARINE FLY